


# FISHWAY STATUS REPORT

Date: 11/22/2014  
 Inspection Period: 11/16 thru 11/22/14

All JD Fishways are inspected twice per day during fish season, March. 1 - Nov. 31  
 Frequent monitoring of the PLC displays in SMF Fisheries Office as necessary.



## JOHN DAY DAM

JD/WC Project-Fisheries  
 P.O. Box 823  
 Rufus, Oregon 97050  
 Phone: 541-506-7860

John Day Dam	Inspections	Criteria	Total Number of Inspections: 14	Temperature: 51 F
Out of Criteria	Limit	Secchi: 5.6 Ft.		
<b>NORTH FISHWAY</b>			In regular service with three out of six AWS pumps available	
Exit differential	0	≤ 0.5'		
Exit Control weirs	0	High setting	High setting is normal for JDN	
Count station differential	0	≤ 0.3'		
Weir crest depth (DS gauge)	0	1.0' ± 0.1'		
Entrance differential	0	1.0' - 2.0'	AVG 1.5	
<b>SOUTH FISHWAY</b>			In regular service with all three AWS turbines	
Exit differential	0	≤ 0.5'		
Exit Control weirs	0	High setting	HIGH since 11/1 to optimize the control section's flows for forebay > 265.0	
Count station differential	0	≤ 0.3'		
Weir crest depth (US gauge)	0	1.0' ± 0.1'		
South entrance differential	0	1.0' - 2.0'	AVG 1.5	
Entrance weir SE1	0	depth (≥ 8')	AVG 9.0	
Collection channel velocity	0	1.5 - 4 fps	AVG 3.21	
N. Entrance PH(Bay 19)differential	0	1.0' - 2.0'	AVG 1.4	
Entrance weir NE1	0	depth (≥ 8')	AVG 8.9	
Entrance weir NE2	0	depth (≥ 8')	AVG 9.0	
<b>JUVENILE PASSAGE</b>			SMF continues in bypass for the full flow PIT tags detections through 24 November	
Forebay/bypass conduit differential	0	4.0' - 5.0'	AVG 4.5	
Submersible traveling screens	0	visual inspect	MU7 - STS failed (torn mesh) & was replaced with spare within a few hours, 11/21 AM	
Turbine trashrack drawdown	0	<1.5', wkly	Next MUs intake trashracks raking scheduled for the last week of November	
Vert barrier screen drawdown	0	<1.5', wkly	Gatewell drawdown performed twice a week or more frequently if high river debris loads	
Spill volume	0	1.6 kcfs	Bay 2 at 1.6 kcfs daylight only through November	
Spill pattern	0	per FPP	Bay 2 at 1.6kcfs to provide additional attraction to JD North Entrance	
Turbine Unit Priority	0	per FPP	Planned BPA Line 1 (MU1-4) outage started on 10/21. RTS is 12/5/14	
Turbine 1% Efficiency	0	per FPP		

## SMOLT MONITORING FACILITY

**Operations:** Sampling season ended on 9/15; SMF continues in bypass for the full flow PIT tags detections until 24 November.

JD Fisheries crew works an abbreviated 18 hrs/7 swing shift schedule as required by FPP.

**Debris:** N/A due to bypass / DA Separator OOS.

**Maintenance:** Annual winter maintenance activities are planned to commence in December. The Sampling Building's piping has been already winterized by JD Fisheries crew, with Mr. Kovalchuk, PSMFC biologist assisting. Cleanup inside and outside of the Building underway.

### Research:

None

**Fallbacks:** AVG: #DIV/0! MAX: #DIV/0! MIN: #DIV/0! System in Primary By-pass

## OTHER ISSUES:

### JOHN DAY

**BIRDS :** see the Avian Numbers tab. We report all species and locations, but in reality only gulls in the tailrace BRZ are relevant at JD.

Very high number of gulls, cormorants and grebes ( > 500,) but it is apparent that they are primarily feeding on the abundant juvenile shad.

Avian line # 26 was found failed/its end in the water on 9/1. This is shore- to-shore line and immediately adjacent to the previously missing # 27.

JD Engineering preparing SOW for the re-installation contract, which is expected in March '15; funding by special CRFM \$.

### Operations:

JD North Fishway is in regular service and meeting the FPP criteria.

JD South Fishway in regular service and meeting the FPP criteria.

Bay 2, 1.6 kcfs daylight spill from Bay 2 continues daily, September through November to provide additional attraction to JD North Entrance.

### Maintenance:

BPA Line 1 (MU 1-4) planned/ replacement outage started on 10/21. RTS is 12/5/14.

JD North AWS pumps - three out of total six are available. AWS pump # 4 continues in OOS status due to its lower bearing issues.

JD Engineering/contractor continue with its repairs.

MU1 scroll case and draft tube were dewatered on 11/ 12. Two burbot (Lota lota) were found among 65 cats and 10 sturgeon in the draft tube.

All fish were successfully salvaged and released back into the river in excellent condition.

Calibration: 10/20/2014 All sensors were within the criteria of 0.3' .

JD South Fishway's bay 1 & 19 tailrace failed back in July, 2014 and were TR'd immediately. Waiting for the new sensors (on order) to replace them.

JD Fisheries crew takes frequent manual measurements/ makes adjustments, which is more than satisfactory to meet the criteria this time of year.

Gatewell Drawdown: 10/26 & 10/30/2014. No units measured greater than 1.3 ft of differential , debris loading is increasing.

### Research:

2014 Adult Fish Counting by Normandeau Associates completed on October 31. No fish counting at JD to occur until 1 April, 2015.

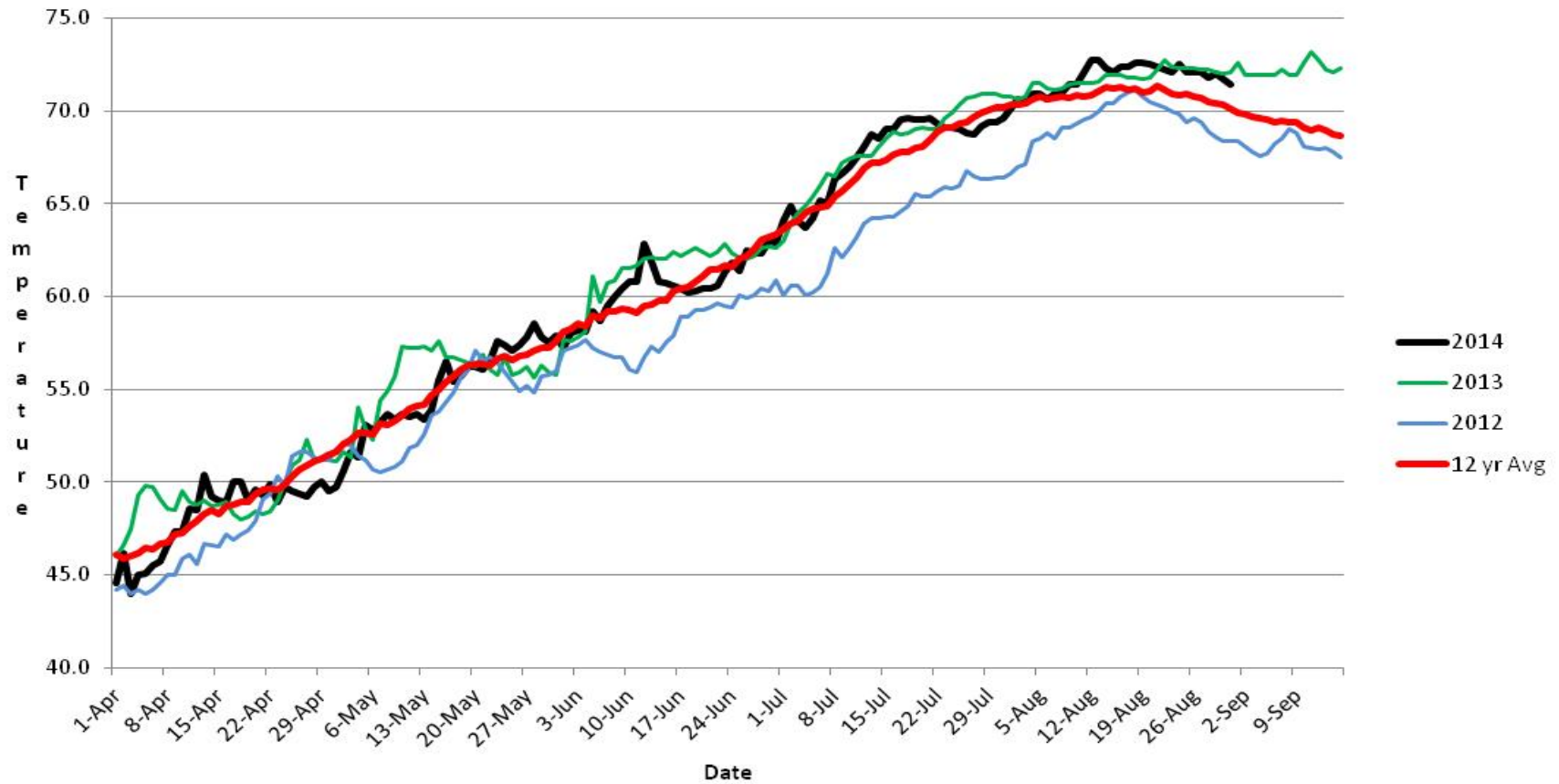
Adult Salmonids Radio telemetry evaluations are ongoing at both JD adult fishway. University of Idaho crew is in charge of detecting of all adult salmonids, which were tagged and released at Bonneville Dam.

Kevin Moynahan

Date: \_\_\_ 26-Nov-14

OPM John Day/Willow Creek Project

### JDA SMF Water Temp



## JDA COLLECTION CHANNEL VELOCITY

Date 7-Nov-14

By: egg, pkr

Bay(s)	Time	Sec.	Velocity (f/s)
0-2	01:11.0	71	2.54
2 - 4	0:02:08	128	3.16
4 - 6	0:03:05	185	3.16
6 - 8	0:04:02	242	3.16
8 - 10	0:04:57	297	3.27
10 - 12	0:05:55	355	3.10
12 - 14	0:06:55	415	3.00
14 - 16	0:07:55	475	3.00
16 - 18	0:08:35	515	4.50

**3.21**

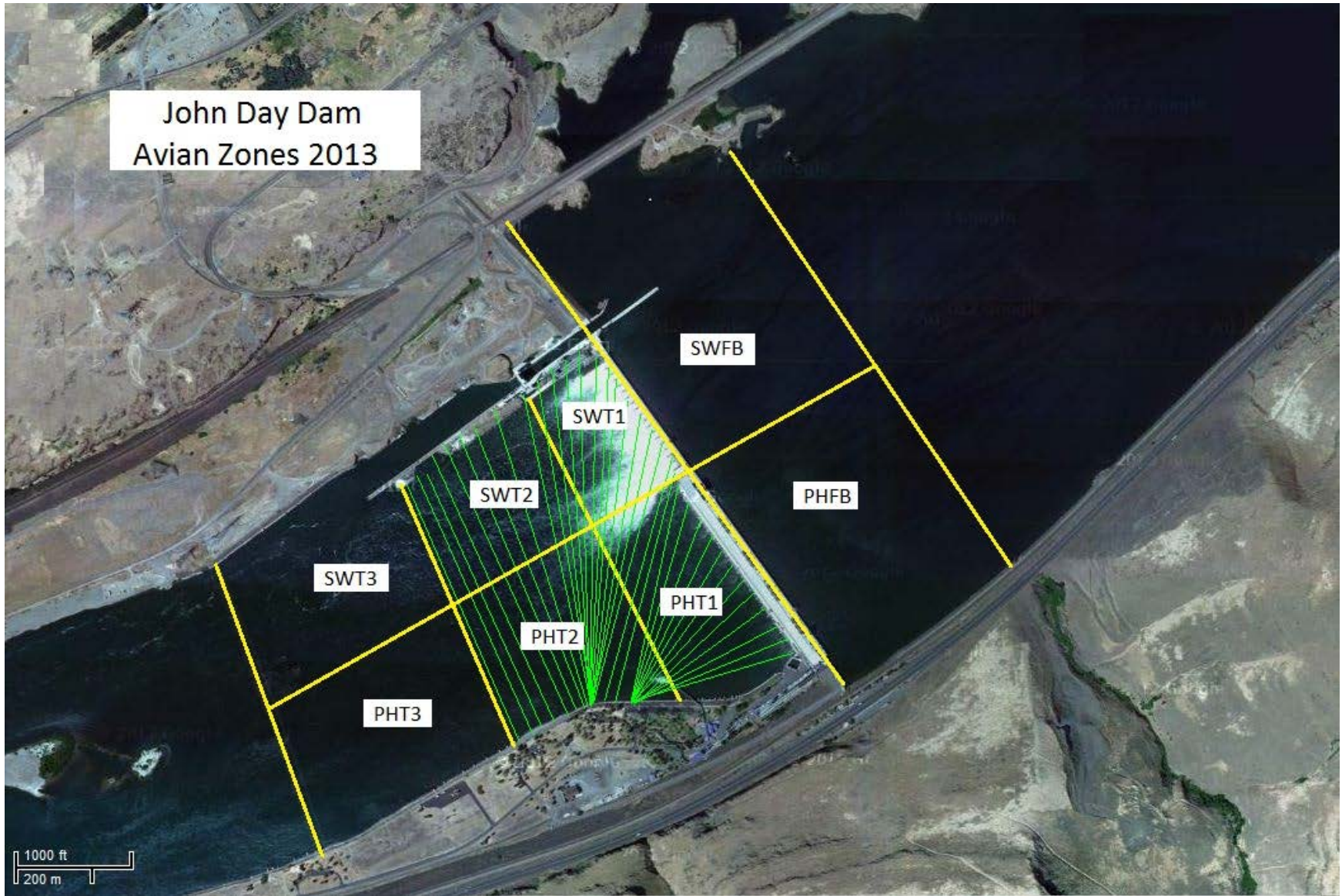








John Day Dam  
Avian Zones 2013





**John Day:**

	Temp:	Secchi:	Fallbacks:
Sun	53	5.0	
Mon	53	5.0	
Tues	52	5.0	
Wed	51	6.0	
Thur	49	6.0	
Fri	49	6.0	
Sat	49	6.0	
AVG:	<b>51</b>	AVG: <b>5.6</b>	AVG: <b>#DIV/0!</b>
			MAX: <b>#DIV/0!</b>
			MIN: <b>#DIV/0!</b>

	NE1	NE2	S.Ent	SE1	N.Ent	JBS Diff	Bay19
Sun	9.3	9.4	1.5	9.4	1.6	4.7	1.4
Sun	9.0	9.0	1.5	9.0	1.5	4.4	1.4
Mon	10.0	10.1	1.3	10.0	1.5	4.5	1.3
Mon	9.1	9.0	1.4	9.1	1.7	4.8	1.3
Tues	9.6	9.7	1.3	9.8	1.5	4.6	1.3
Tues	8.9	8.9	1.5	8.9	1.6	4.1	1.4
Wed	8.9	9.0	1.5	9.0	1.4	4.6	1.4
Wed	8.6	8.7	1.7	8.6	1.5	4.6	1.5
Thur	8.6	8.7	1.5	8.7	1.4	4.1	1.3
Thur	8.9	9.0	1.3	9.2	1.5	4.5	1.4
Fri	8.5	8.6	1.5	8.6	1.5	4.5	1.6
Fri	8.4	8.5	1.4	8.5	1.6	4.6	1.4
Sat	8.6	8.7	1.5	8.7	1.5	4.6	1.3
Sat	8.8	8.9	1.6	8.9	1.4	4.6	1.4
AVG:	<b>8.9</b>	<b>9.0</b>	<b>1.5</b>	<b>9.0</b>	<b>1.5</b>	<b>4.5</b>	<b>1.4</b>